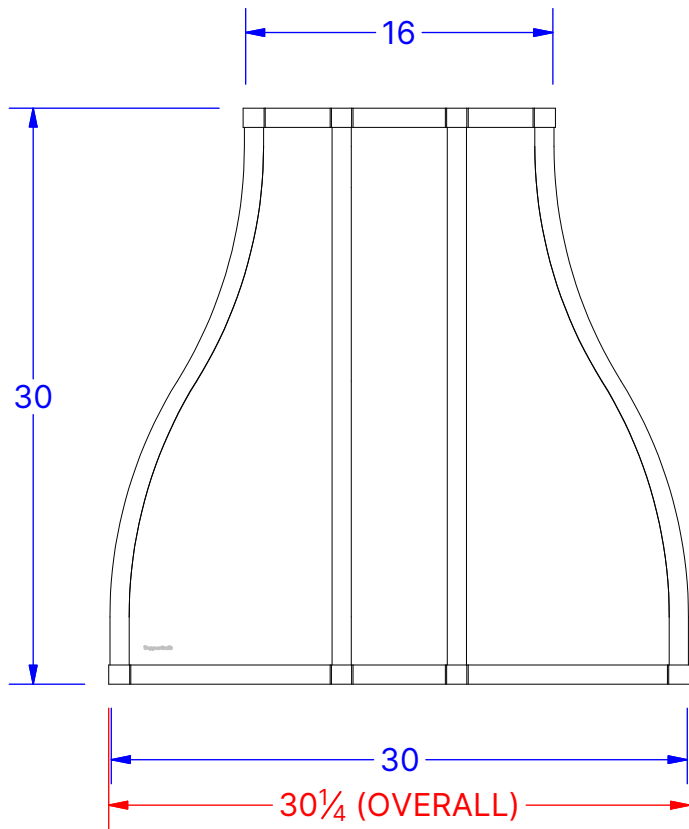
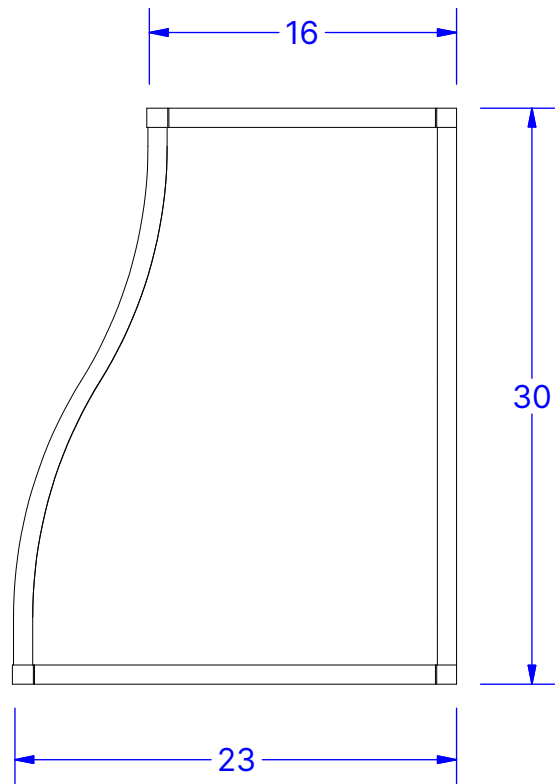


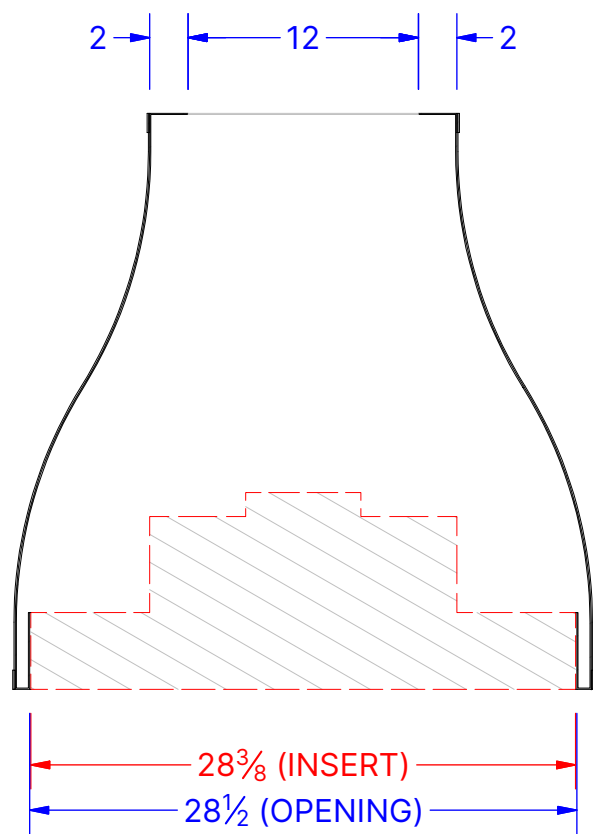
TOP VIEW



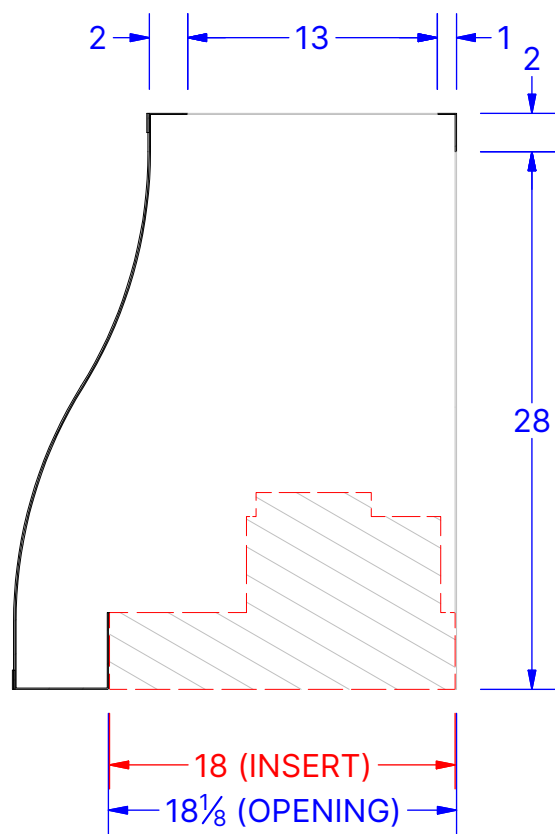
FRONT VIEW



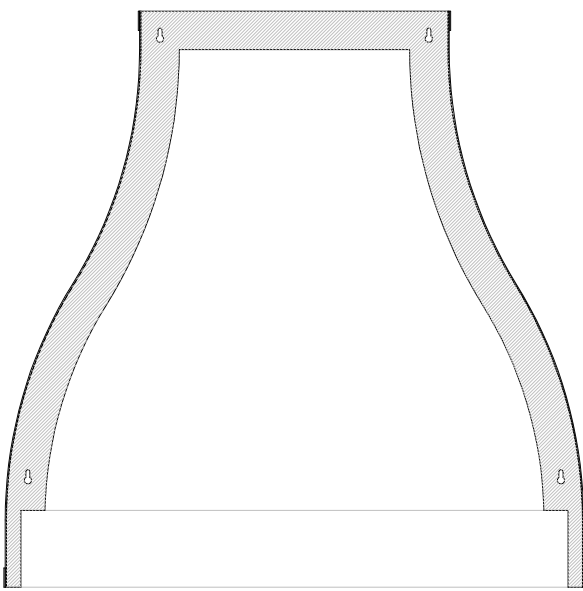
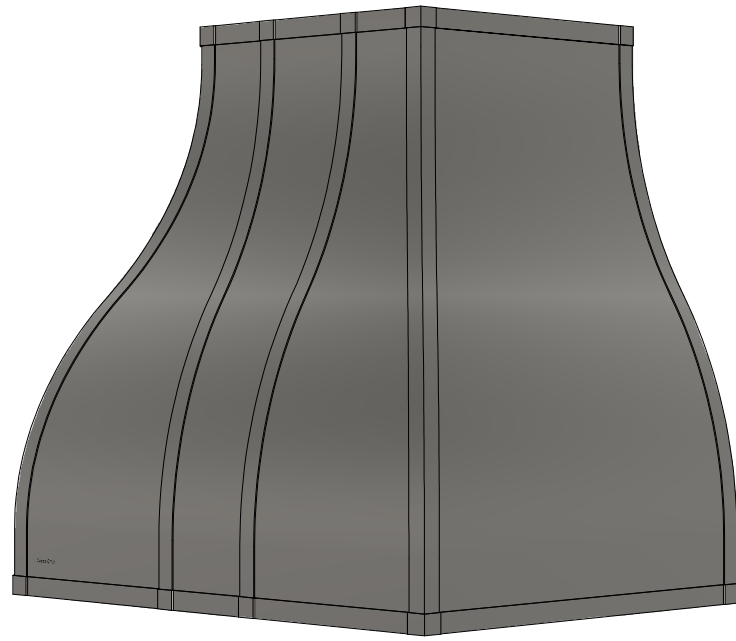
SIDE VIEW



BACK SECTION VIEW



SIDE SECTION VIEW



BACK VIEW

CopperSmith

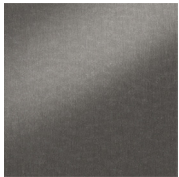
WORLD COPPERSMITH.COM
MINNEAPOLIS, MN
888-431-4677

Specifications

Model: Artisan AT1 Wall Mount
Gauge: 16 ga
Width: 30" (30.25" overall)
Height: 30"
Depth: 23"
Crown: None
Insert Opening: 28.5" x 18.125"
Recirculating: No
Quantity: 1

Body

Stainless Steel - Brushed
Smooth
Living

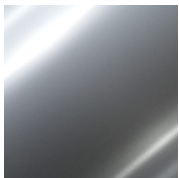


Crown

None
N/A
N/A

Straps

Stainless Steel - Polished
Smooth
Living



Rivets

None
N/A
N/A

Pot Rail

None
N/A
N/A

Comments:

Weight: 56 lbmass

Proprietary Notice

This drawing sheet and contents herein are the property of CopperSmith. Use of this drawing, contents or design concepts for purposes other than estimating, drawing preparation and/or manufacturing for CopperSmith shall be cause for legal recourse by CopperSmith.

Drawn Date	Drawn By	Tolerance	Scale	Rev
3/14/2024	CopperSmith	±0.125	1:10	1

**Artisan AT1 Wall Mount
CSH-AT1**

CSH-AT1-303023-16

ATTENTION:

Take note that the measurements provided do not account for additional parts like straps or rivets unless specifically stated. To prevent any conflicts with nearby cabinets or walls, ensure that you thoroughly check all dimensions highlighted in red before approving this range hood shop drawing.

Displayed colors are for visualization purposes only.

Displayed dimensions do not include accessory components including straps and rivets.