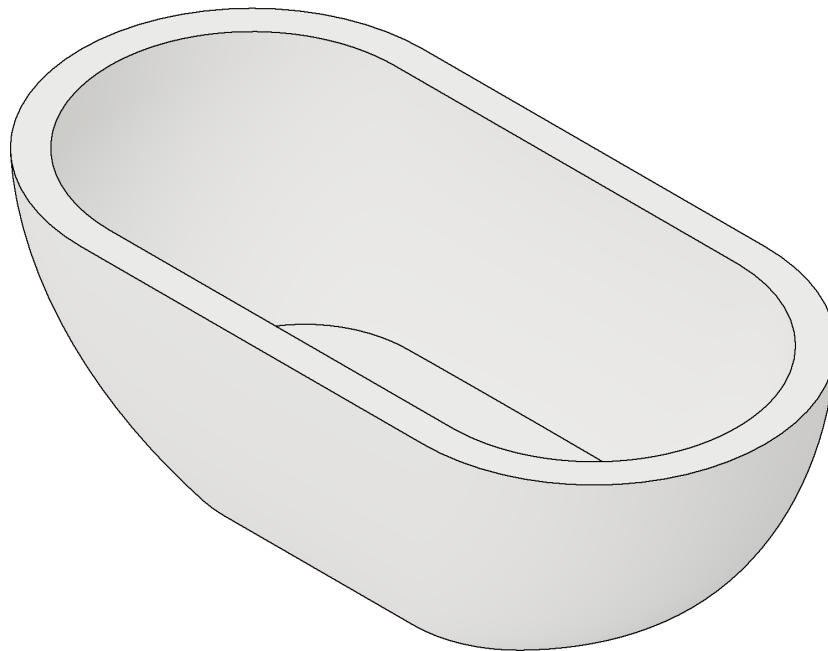


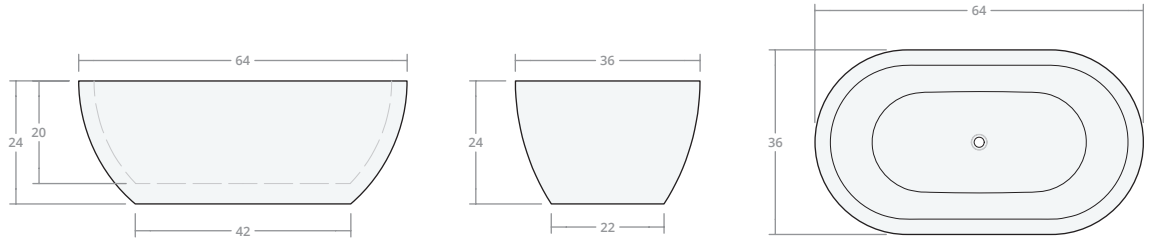
Paris Bathtub Reference Sheet

PARIS BATHTUB Size	WEIGHT		VOLUME		WATER DEPTH	
	16 Gauge	14 Gauge	Max.	To Overflow	Max.	To Overflow
64" L x 36" W x 24" H	164 lbs	217 lbs	108 gal	82 gal	20 in	16 in
64" L x 36" W x 30" H	197 lbs	263 lbs	138 gal	112 gal	26 in	22 in
68" L x 36" W x 24" H	174 lbs	223 lbs	115 gal	87 gal	20 in	16 in
68" L x 36" W x 30" H	208 lbs	260 lbs	147 gal	119 gal	26 in	22 in
72" L x 36" W x 24" H	184 lbs	243 lbs	123 gal	93 gal	20 in	16 in
72" L x 36" W x 30" H	217 lbs	289 lbs	157 gal	127 gal	26 in	22 in



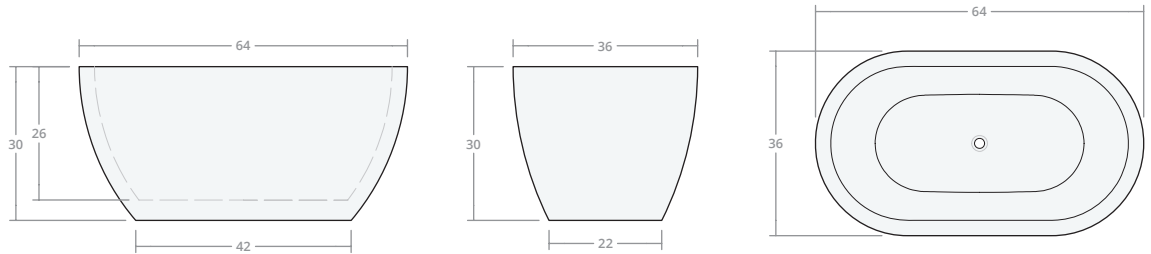
Paris 64L 24H

Dimensions: 64"L x 36"W x 24"H
 Water Depth (max): 20 in
 Water Depth (overflow): 16 in
 Volume (max): 108 gal
 Volume (overflow): 82 gal
 Weight (16 gauge): 164 lbs
 Weight (14 gauge): 217 lbs
 Drain Placement: centered



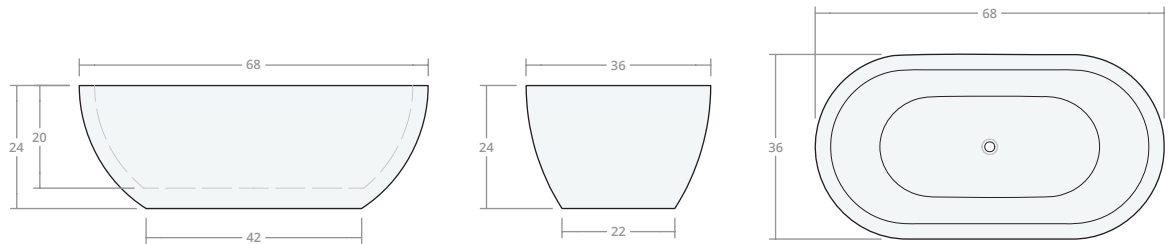
Paris 64L 30H

Dimensions: 64"L x 36"W x 30"H
 Water Depth (max): 26 in
 Water Depth (overflow): 22 in
 Volume (max): 138 gal
 Volume (overflow): 112 gal
 Weight (16 gauge): 197 lbs
 Weight (14 gauge): 263 lbs
 Drain Placement: centered



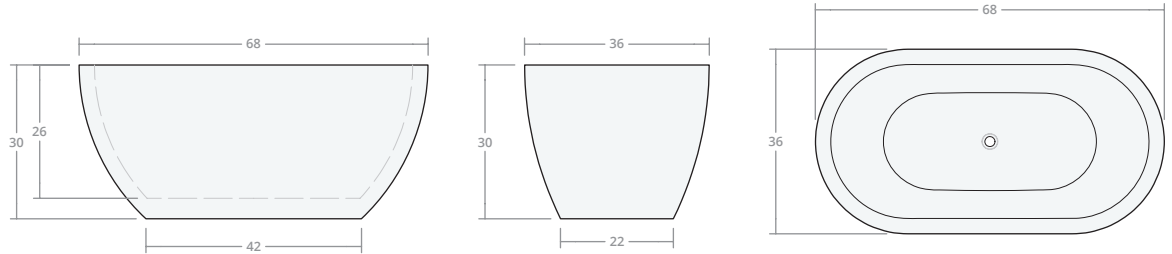
Paris 68L 24H

Dimensions: 68"L x 36"W x 24"H
 Water Depth (max): 20 in
 Water Depth (overflow): 16 in
 Volume (max): 115 gal
 Volume (overflow): 87 gal
 Weight (16 gauge): 174 lbs
 Weight (14 gauge): 223 lbs
 Drain Placement: centered



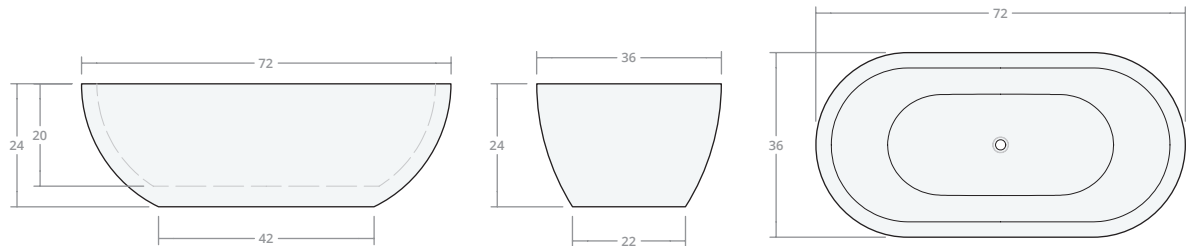
Paris 68L 30H

Dimensions: 68"L x 36"W x 30"H
 Water Depth (max): 26 in
 Water Depth (overflow): 22 in
 Volume (max): 147 gal
 Volume (overflow): 119 gal
 Weight (16 gauge): 208 lbs
 Weight (14 gauge): 260 lbs
 Drain Placement: centered



Paris 72L 24H

Dimensions: 72"L x 36"W x 24"H
 Water Depth (max): 20 in
 Water Depth (overflow): 16 in
 Volume (max): 123 gal
 Volume (overflow): 93 gal
 Weight (16 gauge): 184 lbs
 Weight (14 gauge): 243 lbs
 Drain Placement: centered



Paris 72L 30H

Dimensions: 72"L x 36"W x 30"H
 Water Depth (max): 26 in
 Water Depth (overflow): 22 in
 Volume (max): 157 gal
 Volume (overflow): 127 gal
 Weight (16 gauge): 217 lbs
 Weight (14 gauge): 289 lbs
 Drain Placement: centered

